

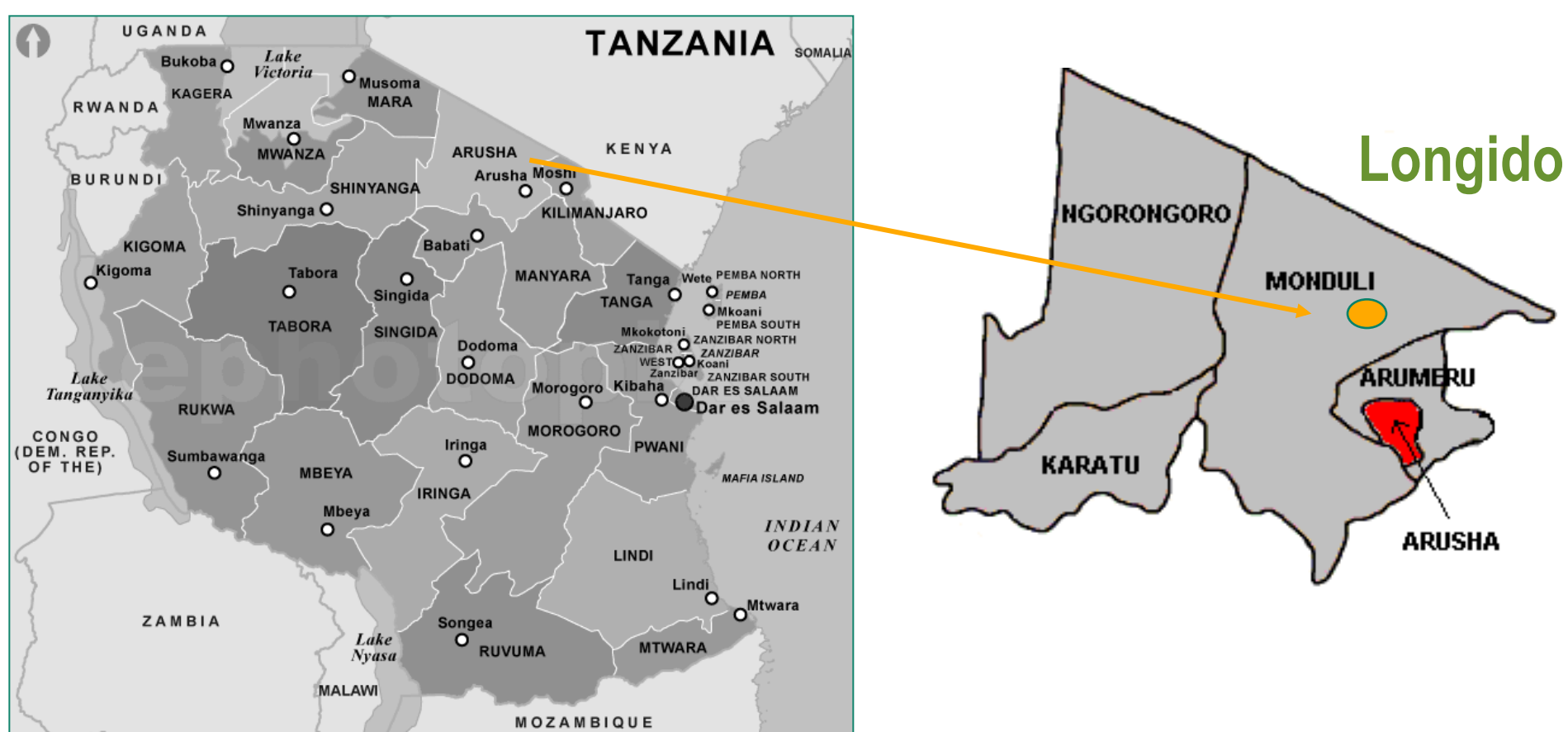


Monitoring the Global Framework for Climate Services (GFCS) Trainings of Extension Workers in Longido, Tanzania

By: Whitney M. Turientine



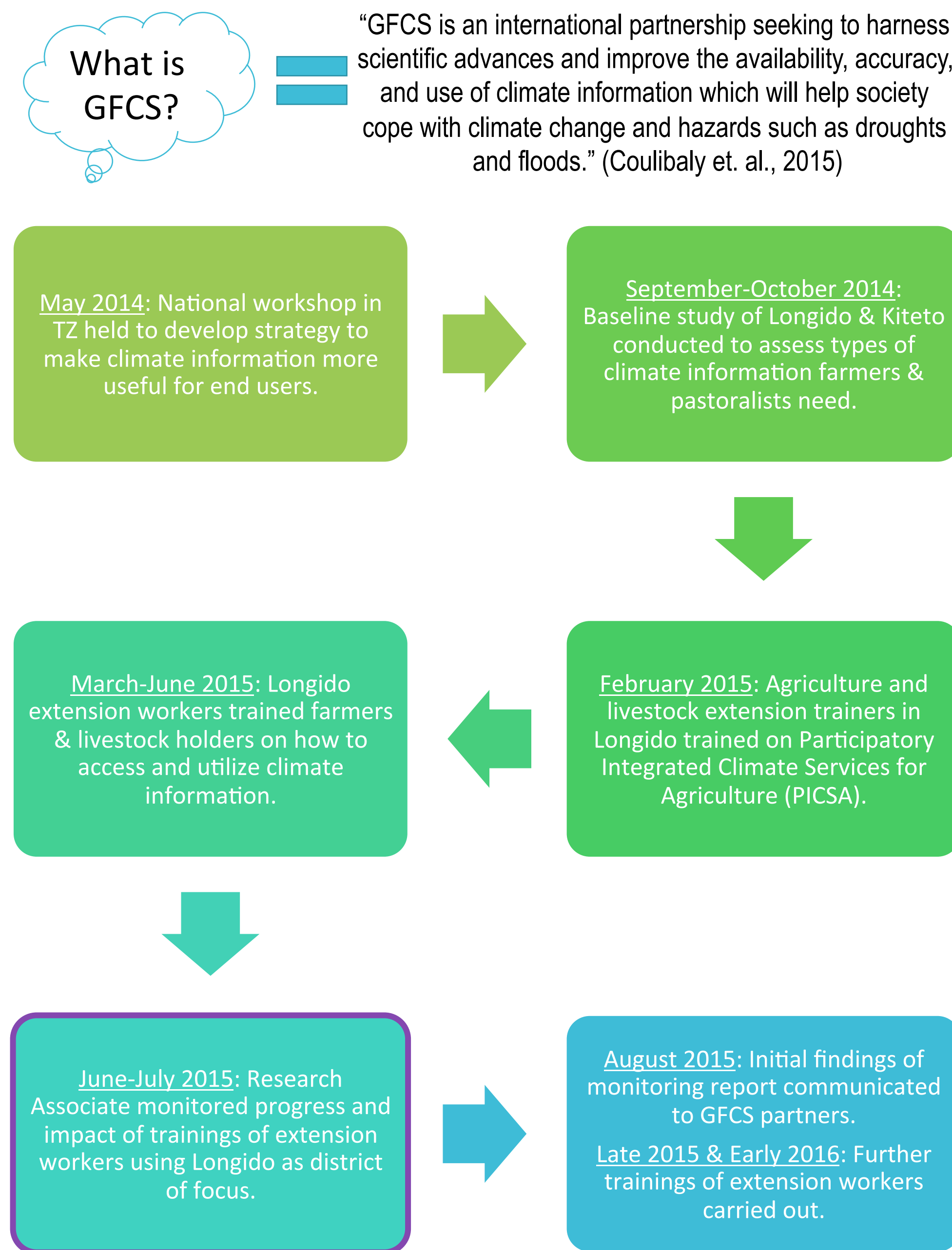
1. LONGIDO, TANZANIA



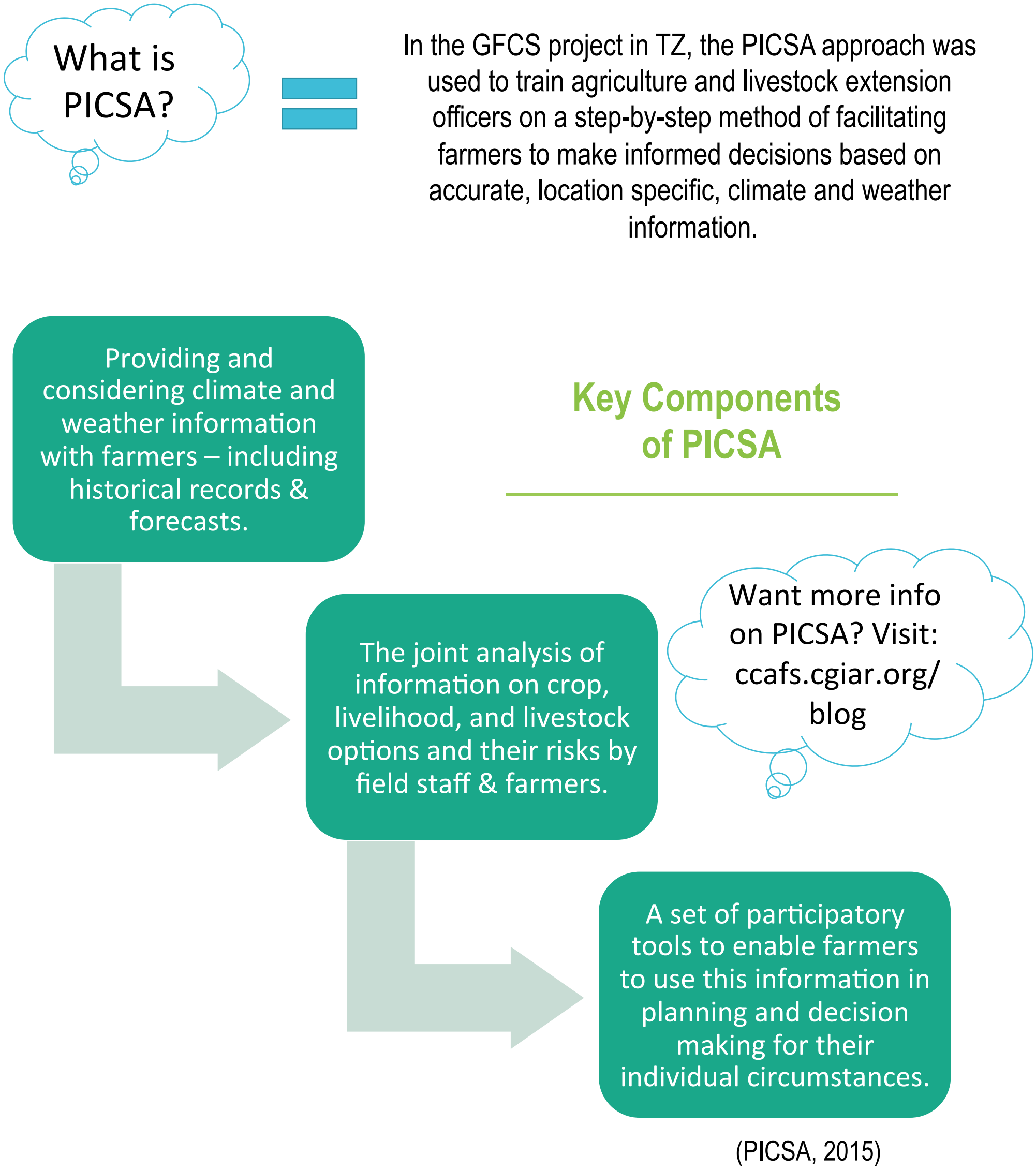
Climate Change & Food Insecurity in Longido

- Climate patterns in Longido District are marked by the long and short rainy seasons.
- Recently, climate change has dramatically disrupted the normal ebb and flow of the rains.
- In the last decade, Northern Tanzania, has experienced extreme droughts.
- Longido itself is particularly vulnerable to extreme food insecurity.
- Over 15 million tons of food aid have been delivered to Longido and surrounding districts alone during these droughts.
- Dissemination of relevant, timely, and accurate climate information can aid farmers and livestock holders in the area to make more climate-smart decisions regarding their livelihoods, thereby reducing climate vulnerability.

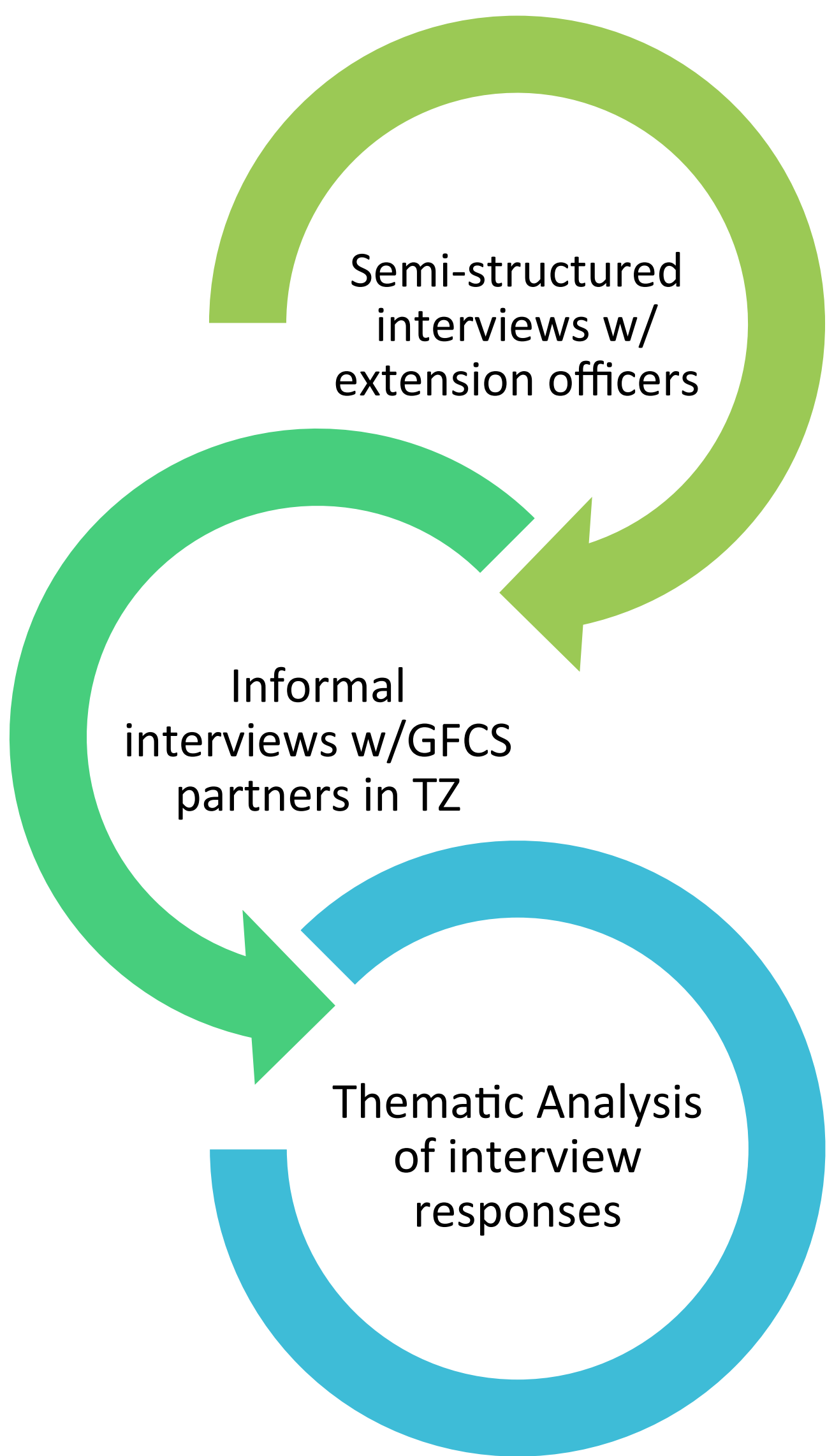
2. TIMELINE OF GFCS ACTIVITIES IN TANZANIA



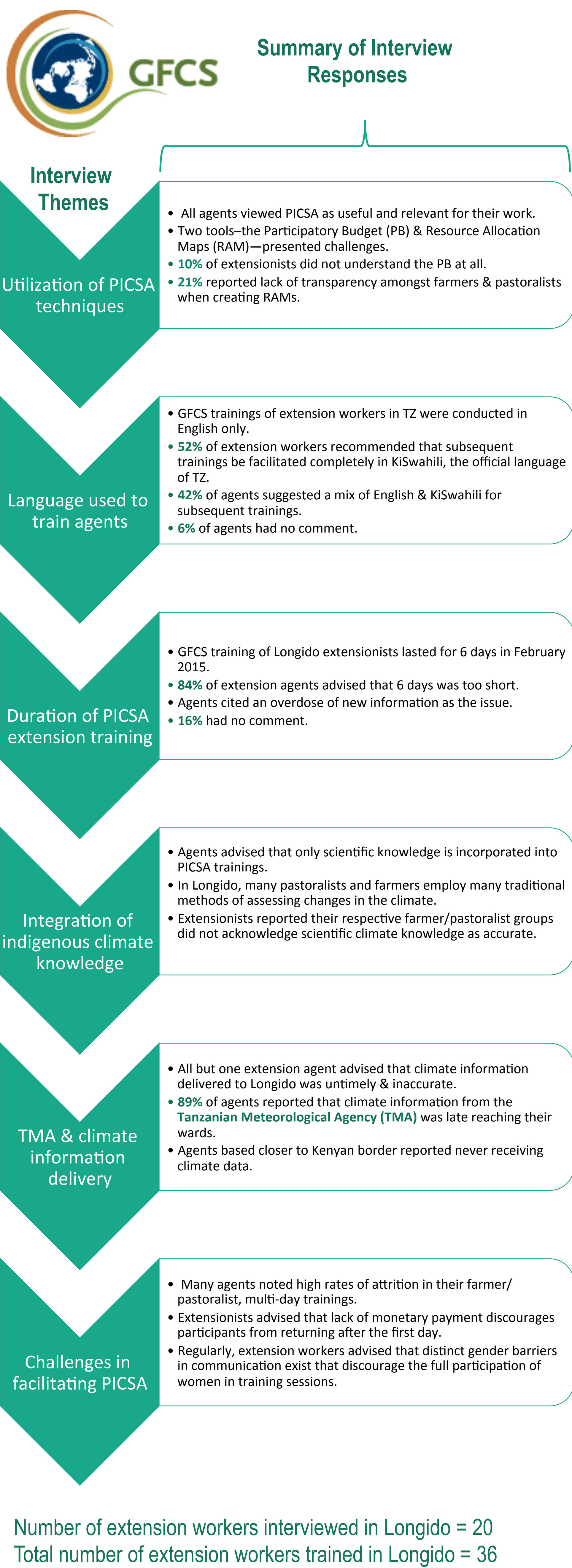
3. PARTICIPATORY INTEGRATED CLIMATE SERVICES FOR AGRICULTURE (PICSA)



4. METHODS



5. RESULTS OF INTERVIEWS WITH EXTENSION AGENTS



6. RECOMMENDATIONS



7. ACKNOWLEDGEMENTS

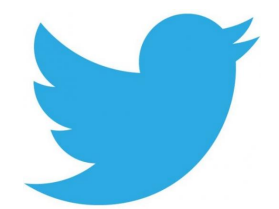
Special thanks to Dr. Sandra Russo (Chair) & Dr. Renata Serra (Committee Member) for advice & guidance throughout all stages of practicum experience. Also, thanks to the following:



8. CONTACT INFORMATION



wturientine@ufl.edu OR
wmturientine@gmail.com



@w_turientine



www.whitneyturientine.wordpress.com

(COMING SOON!)