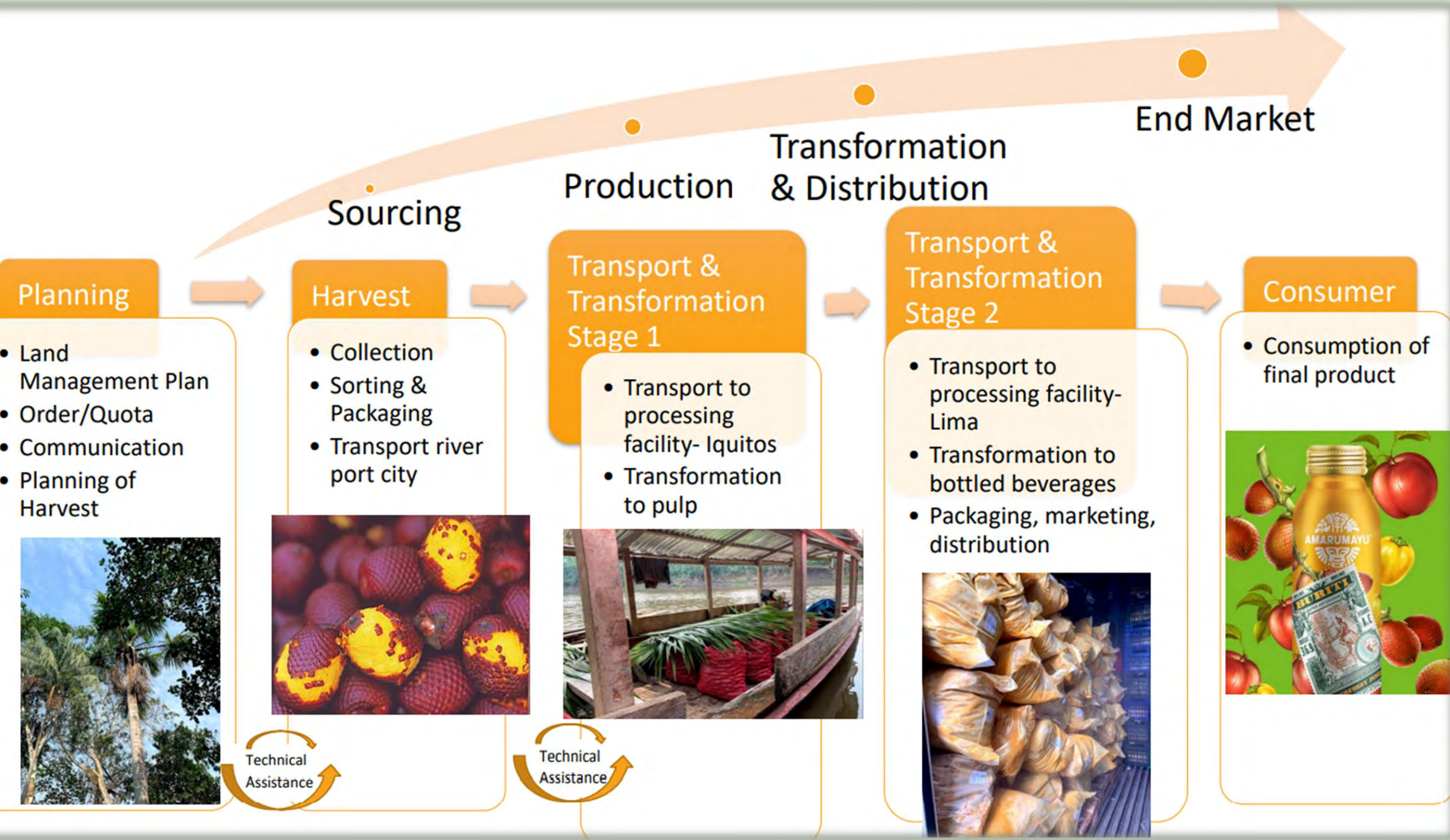


Identifying pathways to prosperity for rural communities in the Peruvian Amazon through the *PRIME* framework and the *Green Value Tool*®

Raine Donohue – rdonohue@ufl.edu
Master of Sustainable Development Practice (MDP)
University of Florida, 2021

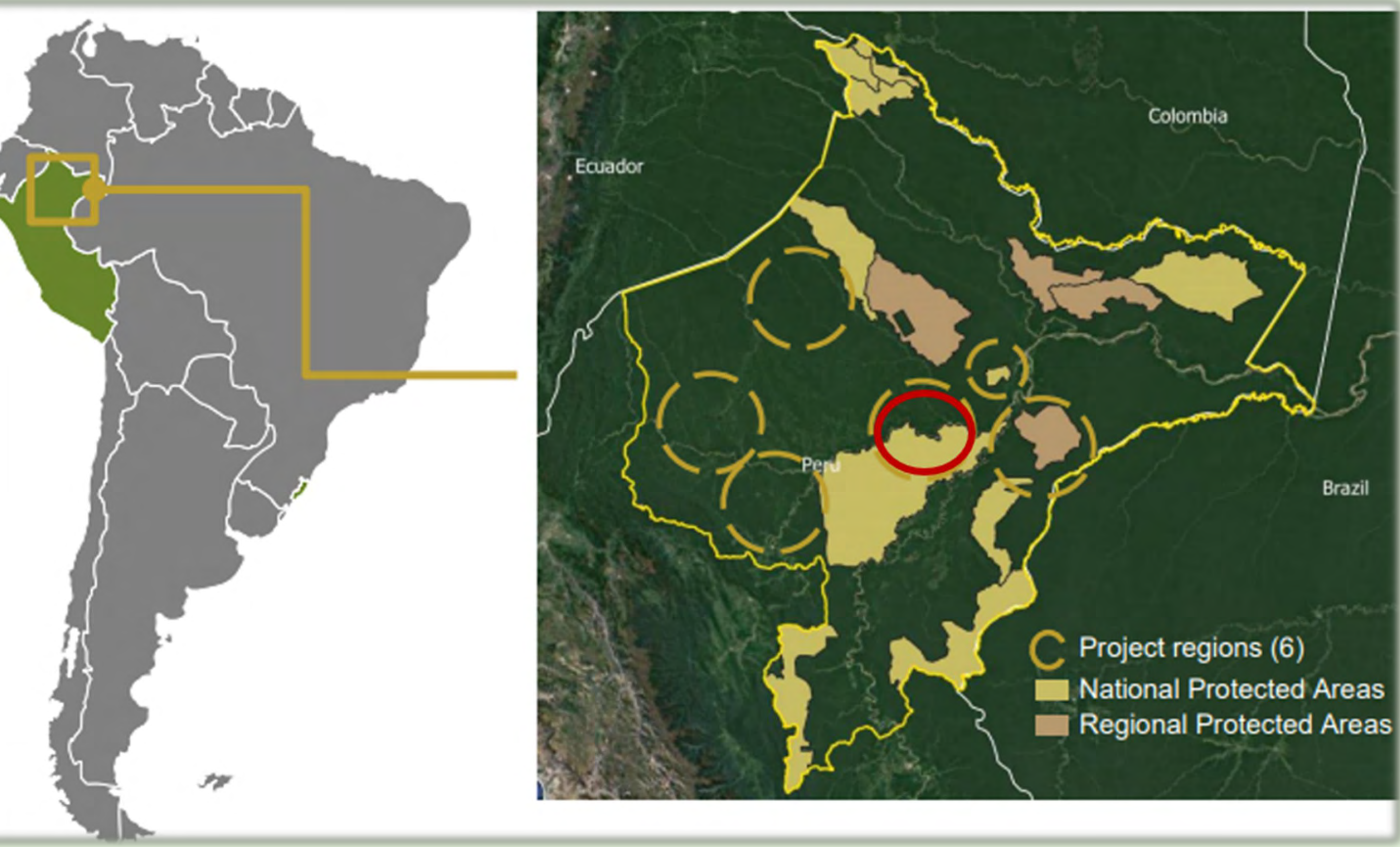
BACKGROUND & PROJECT CONTEXT

- Intact forests are crucial for promoting sustainable development and maintaining human well-being.
- Partner organization *Earth Innovation Institute (EII)* brings together resources and knowledge from different sectors to invest in sustainable community forest practices and generate alternative income for forest reliant communities, while conserving the resource base upon which they rely.
- EII's *Superfruits for Forest Protection* project works with communities to expand the supply chain for *aguaje* palm fruits (*Mauritia flexuosa*), emphasizing sustainable harvesting and improved income.



STUDY SITE

- Pacaya Samiria, Loreto Department, Peru (Population: 42, 000)



RESEARCH OBJECTIVES

1. Enhanced understanding of interactions among key actors in the context of sustainable value chain development in the Peruvian Amazon.
2. Evaluate the factors and conditions contributing to rural forest-reliant populations pathways towards prosperity utilizing the *PRIME* framework.
3. Conduct a simplified financial analysis of *aguaje* activities using the *Green Value Tool*®.

METHODS

METHODS FOR DATA COLLECTION	METHODS FOR DATA ANALYSIS
<ul style="list-style-type: none">Semi-structured InterviewsWorking GroupParticipant ObservationStakeholder AnalysisValue Chain Analysis	<ul style="list-style-type: none">Content Analysis using PRIMEGreen Value Tool Financial Analysis

RESULTS

PRIME

- The results from the PRIME analysis indicate that there are linkages between (P)roductivity, (R)ights, (I)nstitutions, (M)arkets, and (E)cosystem Services that influence the barriers and opportunities for sustainable aguaje production by rural communities.

PRIME Components	Key Findings	Cross-cutting Categories	Themes/ Concepts
Productivity	Transportation, Product Quality Control, Formalization Process, Physical Burden, Aguaje Availability, Infrastructure	Gender dynamics	Project Bottlenecks & Problems
Rights	Land Rights, Collaborative Decision-making, Lack of Defined Roles	Climate Change	General Challenges
Investments/ Institutions	Political Agendas, Efficiency, Continuity, Collaboration	Environmental Concerns	Project Benefits
Markets	Direct Markets, Diverse Markets, Market Expansion	Transportation	General Benefits
Ecosystem Services	Climate Change Mitigation, Socio-economic Well-being & Environmental Conservation	Politics	

GREEN VALUE TOOL & FINANCIAL VIABILITY

- The results from the Green Value Tool indicate that the current price paid for aguaje in the Superfoods project does not cover the cost of production.

	Version 2.0	Version 3.0
Total Cost (soles)	1,951	1,848
Total Income (soles)	700	600
Total Profit (soles)	-1,251	-1,248
Rate of Return	-64%	-68%
Price/Unit (soles)	98	92
Difference in Income	100 soles	
Total Cost Difference	103 soles	
Difference in Price/Unit	6 soles	

CONCLUSIONS

- Unique application of *PRIME* & *Green Value Tool*
- Data driven insights
- Persistent barriers and bottlenecks
- Direct use value & Indirect use value not reflected in price
- Need for coordinated investments in infrastructure

INSIGHTS & RECOMMENDATIONS

- Prioritize opportunities for creating income and economic incentives for forest conservation through the expanding market for carbon credits.
- Improve infrastructure within the region.
- More studies and investment is needed to prove the viability of solar powered canoes and refrigerator systems.

While these insights should be considered by local and international actors for further project progress and development, additional research on the economic and environmental trade-offs of *aguaje* production is still needed.

Acknowledgements

Advising Committee
University of Florida, CLAS, FLAS, MDP
Earth Innovation Institute
Shoana Humphries
Community members of Pacaya Samiria & the interviewees that participated in this study.