

Facilitating the design of the monitoring and evaluation system for the Partnership for Reimagining Gainesville (PRG)

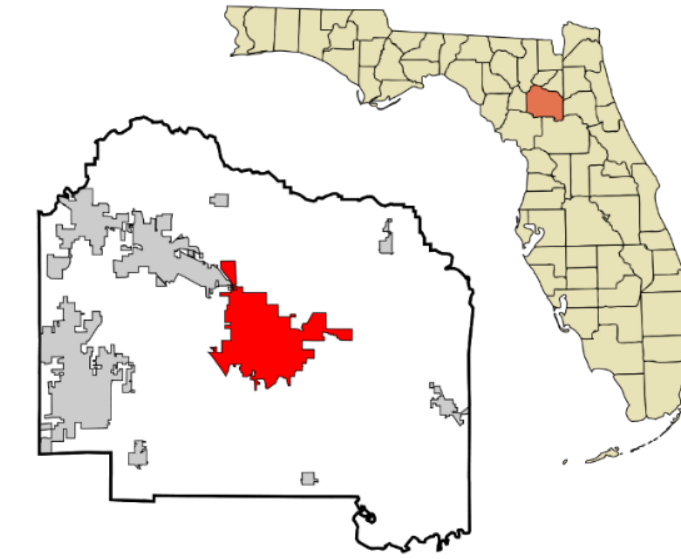
Omar Hernandez, Master of Sustainable Development Practice (MDP), University of Florida

Committee

- Dr. Glenn Galloway (MDP) – Chair
- Manda Wittebort (UF BCLS)
- Karissa Raskin (PRG – Host organization)
- Jamie Kraft (Minor in Entrepreneurship)
- Dr. Muthusami Kumaran (Nonprofit leadership)

Background

- Gainesville, FL (Alachua County)
- Racial inequities (2018 BEBR Report)
- Poverty rate higher than in FL and USA
 - 37% of blacks / 31% of Hispanic
 - Unemployment: Blacks 2.5 / Hispanic 1.5x
- 2020 PRG (UF + City GNV + CFNCF + Childrens Trust)
- Continuous engagement since Spring 2022



Justification

- Participation in BCLS Path to Purpose
- PRG 2022 Goals – Need to measure impact

Keywords

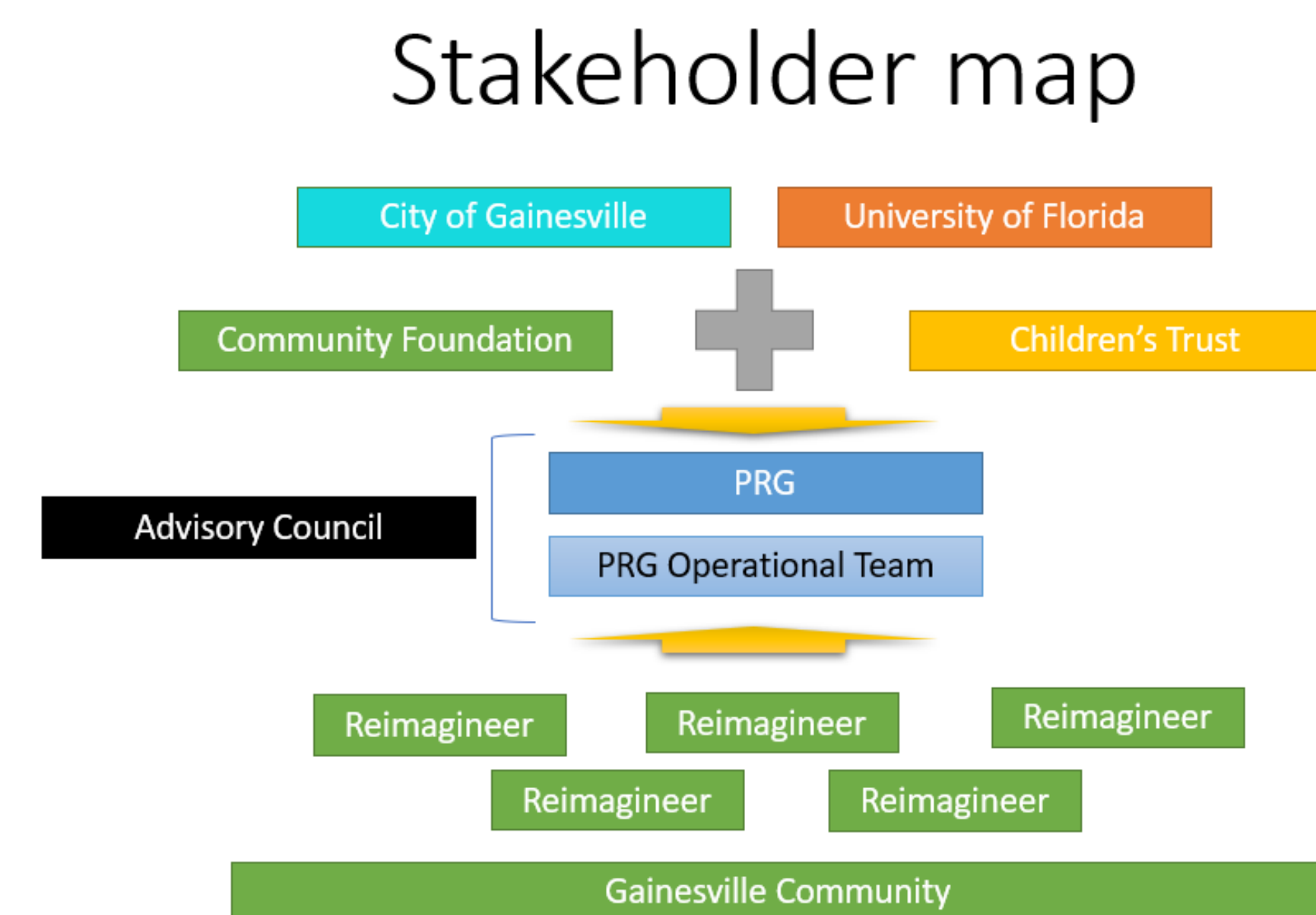
- Monitoring, Evaluation and Learning
- Asset-Based Community Development
- Capacity Development
- Social change and justice
- Citizen participation

References

Johnson, A. (2019). UF BEBR (2018), PRG (2022)

Objective

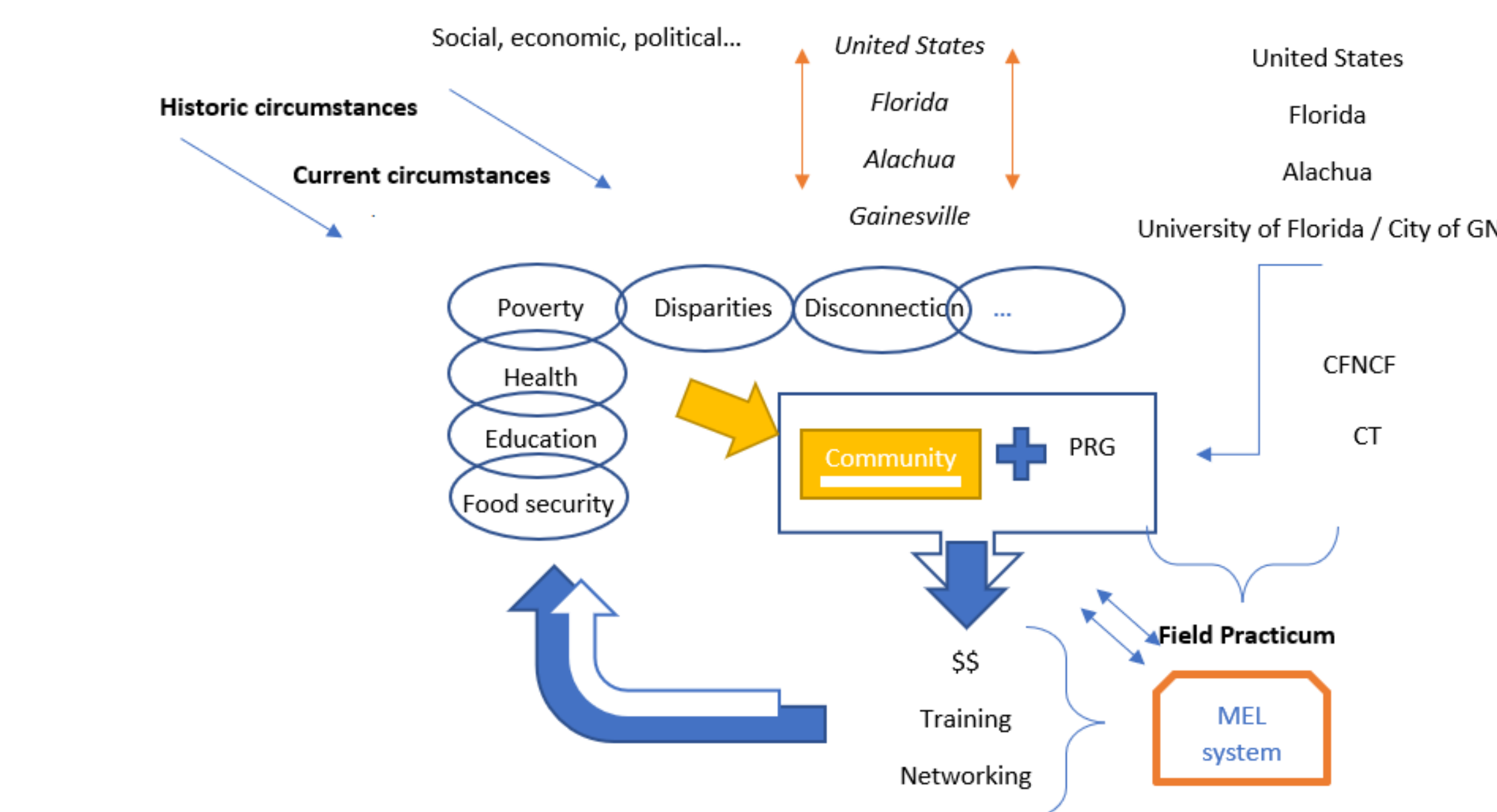
Develop a Monitoring and Evaluation System for PRG to measure the impact of its work and that of the Reimagineers through dialogue with all stakeholders



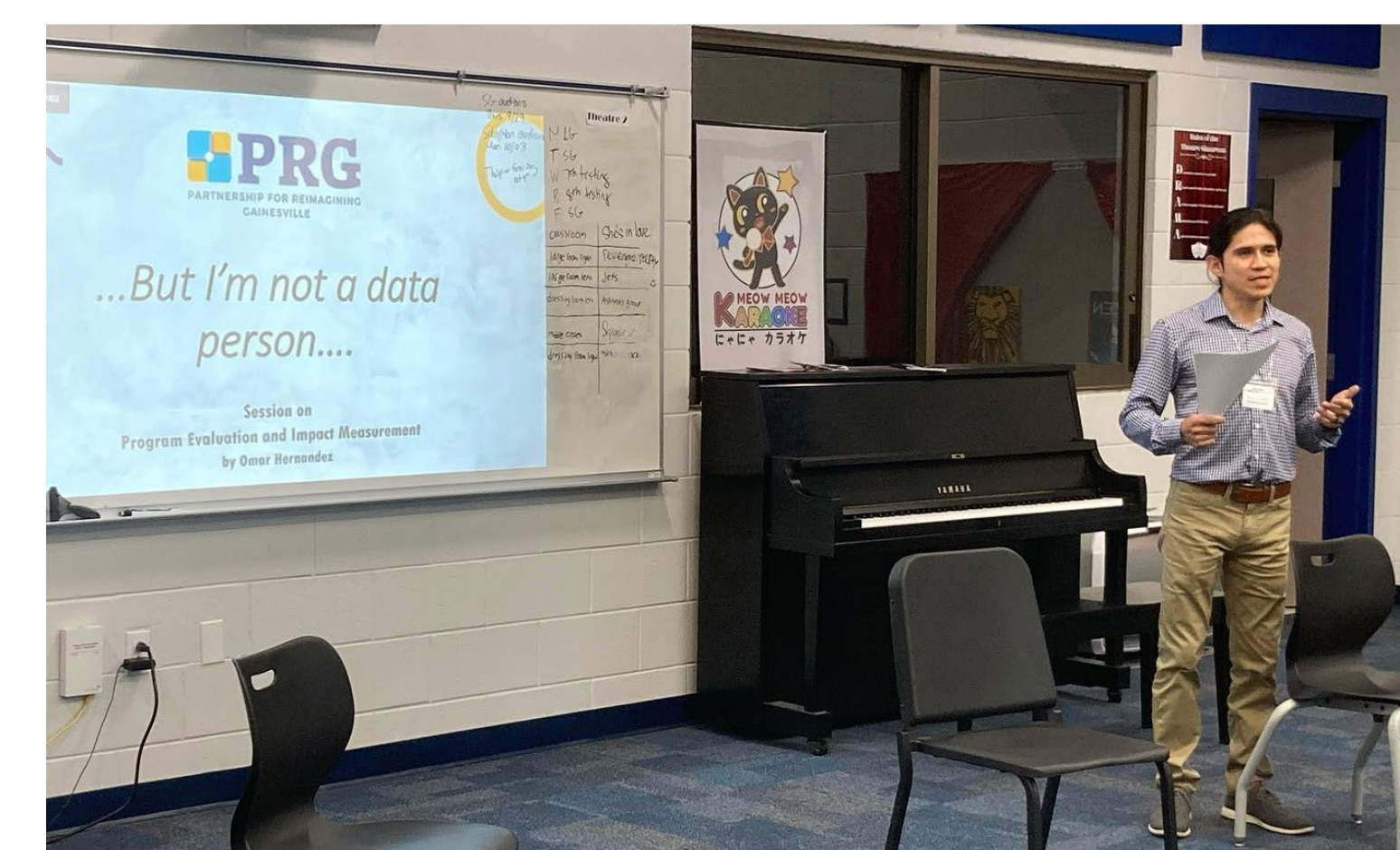
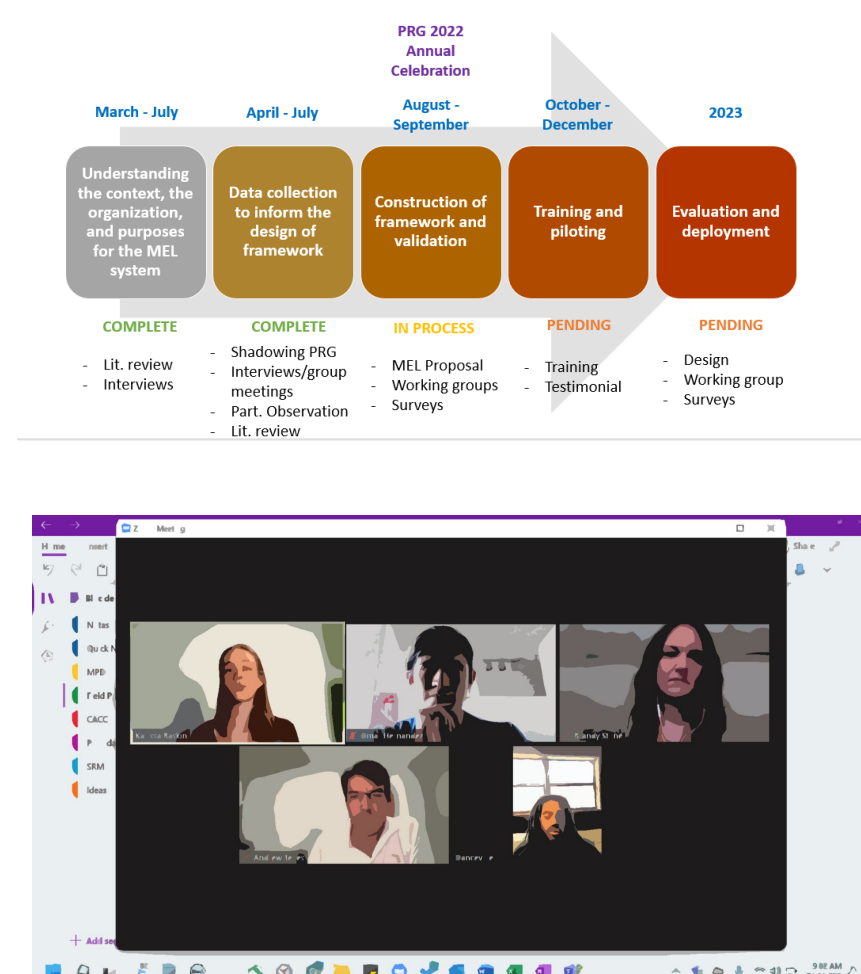
Methods

- Literature review and documents/comparative review
- Participatory Action Research
- Ethnographic observation
- Semi-structured interviews
- Workshops

Conceptual/Contextual framework



Progress (phases of PRG MEL system development)



Outcomes

- Delivery of 1 SMART goals workshop on PRG 2022 Annual Conference -12 Reimagineers
- Delivery of 1 Planning and Evaluation workshop to PRG Advisory Council
- Creation of MEL kit: PRG-MEL Strategy document and MEL templates and manuals
- Delivery of nonprofit management, business, and development practice consulting support (5 Reimagineers)
- Facilitation of PRG organizational development

Conclusions/findings

- Monitoring and evaluation of PRG and Reimagineer's work should be aligned at its core
- Opportunity to increase evidence-based programming/alignment with BEBR data
- Huge opportunity for capacity development for community leaders pursuing entrepreneurial/social goals
- Opportunity to use PRG model as a reference for other cities: community leadership and ownership for its own development goals
- Opportunity to widen the focus of PRG work and communicate it
- Opportunity for Reimagineers to further engage and collaborate amongst them

Recommendations

- Systematization of capacity development efforts throughout the year for both Reimagineers and PRG AC
- Alignment with 2018 BEBR report data
- Explore further collaboration between city of Gainesville and Alachua county on sustainable development challenges

Further information

ohernandezcarmon@ufl.edu
<https://coo.ufl.edu/initiatives/prg/>
<https://leadershipandservice.ufl.edu/>

